

CORRESPONDENT'S ADVICE

KOREA

05 OCT 2021

COVID-19 Quarantine Regulation

The following information was received from our correspondent on 5 October:

QUOTE

Further to our last circular, please find attached the updated summary of Quarantine Regulation being implemented by the Korean authorities regarding Covid-19 as of 5th October 2021.

Should you have any further enquiries on the issue, do not hesitate to contact us.

UNQUOTE

Correspondent's contact details

SPARK INTERNATIONAL

Tel : 82-2-3276-2622 E-Mail : spark@sparkinternational.com web : www.sparkinternational.com



DISCLAIMER

This Correspondent's advice is published by The Swedish Club as a service to members. While the information is believed correct, the Club cannot assume responsibility for completeness or accuracy.

lossprevention@swedishclub.com

www.swedishclub.com

South Korea Quarantine Regulation Update

5th October 2021

1 - Notification of Quarantine (Article 9, Quarantine Act)

The master of the vessel* shall notify the director of the quarantine station via VTS or the agent 24hrs prior to arriving at the quarantine area. Arrival / Departure General Declaration must be submitted upon notifying the authorities.

*The owner of the vessel / vessel's agent may notify the authority on behalf of the master.

2 - Quarantine Inspection (On-Board Inspection / Electronic Quarantine)

1. On-board Inspection

All crew members and passengers shall be subject to quarantine inspection such as temperature check and health questionnaires conducted by the quarantine officer upon arrival. Vessels subject to on-board inspection are as follows:

A. Vessels arriving from areas listed below;

- ♦ Vessels that have departed from / passed through **Enhanced Quarantine Required Countries*** within the past 14 days

* The Philippines, South Africa, Bangladesh, Pakistan, India, Indonesia, Uzbekistan, United Kingdom, Myanmar, Turkey, Kyrgyzstan and Kazakhstan Ports (Last updated 20th August)

- ♦ Vessels that have departed from Quarantine Management Area*

* Worldwide due to COVID-19; *Actual practice may vary between ports.*

B. Vessels with reported cases of death / crew member infection

C. Vessels with seafarers that have embarked the vessel within the past 14 days

D. Vessels without a valid 'Ship Sanitation Control Certificate'

E. Vessels where on-board inspection is deemed necessary by the director of National Quarantine Station(NQS).

2. Electronic Quarantine

Vessels NOT subject to on-board inspection shall be subject to electronic quarantine; failing to clear the electronic quarantine shall subject the vessel to on-board inspection.

3 - Verification of Vaccination

The following criteria must be met in order to verify one's vaccination completion status.

- 1) The person must have been fully vaccinated in Korea.
- 2) The person must have completed the vaccination 2 weeks* prior to departure from Korea.
(* e.g. If vaccinated on 10th April, departure must be no earlier than 0000hrs 25th April)
- 3) The person must not show symptoms of COVID-19.
- 4) 2 weeks or more days must have passed after being vaccinated before the person's departure from Korea.
- 5) The person must not have departed from or passed through countries with high numbers of Beta·Gamma·Delta COVID-19 Variants within 14 days.
 - Such countries as of September 2021 are South Africa, Nepal, Russia, Lebanon, Malawi, Mozambique, Bangladesh, Vietnam, Botswana, Brazil, Suriname, UAE, Haiti, Angola, Eswatini, Uzbekistan, India, Indonesia, Zimbabwe, Chile, Kuwait, Trinidad & Tobago, the Philippines, Ghana, Namibia, Myanmar, Oman, Jordan, Japan, Kazakhstan, Kyrgyzstan, Tadjikistan, Tanzania, Turkey, Pakistan & Peru. (Subject to change, last updated 1st September)

Koreans verified of having been vaccinated may be exempted from self-quarantine.

4 - PCR Negative Certificate

1. Submission

All persons who have embarked on a vessel outside South Korea after 24th Feb 2021 must submit PCR Negative Certificate to the NQS.

2. Exemption

The submission of PCR Negative Certificate is exempted under the following cases.

- a) Cases where 28 or more days have passed since departing the port of embarkation and the vessel has called two or more countries before entering Korea;
- b) Cases where the vessel is entering Korea to take shelter from bad weather conditions without initial plans to call Korean ports.
- c) Cases of other reasons where there was no initial plan to call Korean ports but has become unavoidable (to be determined by the director of NQS)

- d) Cases where vessels of shipping companies registered in Korea has departed from Korean ports and have only remained on high seas or sea areas designated by the local authorities. (as of 09th April 2021)
**Persons subject to this case shall not be exempted from quarantine/isolation even if they were to satisfy exemption requirements*
- e) Koreans that have embarked the vessel from Myanmar and Singapore.

3. Requirements

- ◆ Certificates must be issued within 72hrs prior to the date of departure.
 - * Certificates issued within 72hrs prior to the date of embarkation may be accepted, if
 - 1) the duration of voyage is more than 14 days after departure from the port of embarkation; or
 - 2) cargo operations can be carried out without direct contacts being made between shore and vessel personnel (e.g. Container, Liquid Cargo, LPG, Crude Oil, Petroleum Product Carrier / Vessels)
- ◆ Persons without valid certificates / certificates that have failed to meet the standard shall be tested; vessel operations may commence only after the said persons obtain 'negative' results.
- ◆ Only PCR Negative Certificates in the following forms are accepted
 - Original PCR Negative Certificate (in Korean or English); or,
 - Original PCR Negative Certificate (in any other language) alongside a Korean or English Translation; or,
Note that translations require certification from local notary institutions or embassies; translations from authorized translation offices (including authorized translators) do not require additional notarization.
 - Copy of the PCR Negative Certificate, should the vessel call multiple ports after the Certificate has been issued
- ◆ When departing from Enhanced Quarantine Required Countries* with PCR test institutions designated by embassies in respective countries, only certificates from such institutions shall be accepted.** Certificates issued in Russia without a QR code will NOT be accepted.
 - * The Philippines, South Africa, Bangladesh, Pakistan, India, Indonesia, Uzbekistan, United Kingdom, Myanmar, Turkey, Kyrgyzstan and Kazakhstan Ports (Last updated 20th August)
 - ** See [Appendix 1]
- ◆ The following information must be included in PCR negative certificates: (as of 11th March 2021)
 - 1) Name (as appears on the passport)
 - 2) Test Type
 - Accepted Test Types: PCR, LAMP, TMA, SDA, NEAR;
 - RAT, ELISA, & any form of at-home-test results will NOT be accepted
 - 3) Test Result
 - 4) Issuing Date
 - 5) Date of Birth (Passport Numbers / ID Card numbers also accepted)
 - 6) Test Date
 - 7) Name of Issuing Institution
- ◆ PCR test will be carried out on the seafarers without a valid PCR Negative Certificate and vessel operations will only be allowed to commence should the crew are confirmed negative. Also, none of the crew will be allowed to disembark the vessel with crew not in possession of a valid PCR

SPARKINTERNATIONAL

Negative Certificate. Exceptions may be made for Korean seafarers under certain circumstances. Please refer to “8- Flow Chart for Quarantine Procedures” below.

4. Administrative Charge

- ◆ An administrative charge of KRW1,000,000 will be levied per each unsatisfactory PCR Negative Certificate. Failing to submit the Certificate will result in the same amount of administrative charge. This regulation has been in effect from 0000hrs 07th April 2021.
- ◆ Due to amendments made to the Korea Quarantine Act, there had been a temporary interruption in levying administrative charge from 05th March to 06th April 2021. As the amendments were directly related to administrative charges, KDCA had gone through an internal review / discussion and confirmed that the legal basis for levying administrative charges are Article 29, Article 41 of the Quarantine Act and Article 9 of the Enforcement Decree of the Quarantine Act.
- ◆ KDCA has confirmed that the regulation above will NOT be retroactively applied to cases before 07th April 2021. Please refer to the below table for your easy reference.

Violation Date	Administrative Charge
~ 04 th March	KRW 2,000,000
05 th March ~ 06 th April	-
07 th April ~	KRW 1,000,000

5 - Special Entry Procedure & Testing for Off-Signers

1. Special Entry Procedure

All off-signers (excludes persons leaving the vessel for operation within the security area) must submit ‘Travel Record Declaration’ and will be checked on whether they have installed the ‘Self Diagnosis Mobile App’.

Subject to conditions, off-signers are required to install one of the following applications.

- ◆ **Self Diagnosis Mobile App:** Foreigners staying for a short period, foreigners granted shore leave, Koreans re-embarking the vessel, and persons exempt from quarantine.
- ◆ **Self-quarantine Safety Protection App:** Long term residents (foreigners), Korean off-signers that have entered Korea through Customs.
* includes persons that have been vaccinated in Korea

2. Testing

All off-signers(excludes persons leaving the vessel for operation within the security area) are subject to testing

- A. **Korean** Off-signers: May await the results in their respective residences.

- B. **Foreigners, Reembarking Koreans, persons exempt from quarantine:** Must remain on-board until the test results arrive.

The entire crew who are deemed to be in constant contact with port personnel (i.e. those from deep sea fishing vessel, reefers, ships scheduled for repairs) will undergo PCR test regardless of whether they will disembark the vessel or not.

Testing (Sample Collection) will be conducted at a time and in a location designated by the director of the NQS. An agent from the shipping agency / company shall accompany the off-signer and to the vessel after the sample has been collected. Safe transportation system must be secured, and the use of public transportation is prohibited.

Testing of persons showing symptoms shall be conducted in a separate location. The person must be isolated inside their cabin until the results arrive.

A **pratique** is issued upon the confirmation of 'negative' status. The pratique is valid for 72hrs and the recipient of the pratique must undergo immigrations within the 72hrs. A pratique without a period of validity (i.e. pratique valid indefinitely) will be issued if all seafarers are tested.

The shipping company or the agent may receive the pratique in place of the seafarer. Koreans subject to self-quarantine or emergency patients can receive pratique prior to the test results.

6 - Quarantine/Isolation (of Persons)

1. General

Upon the submission of PCR Negative Certificate,

- A. **Koreans** and **Long-term Residents**(foreigners) will be subject to 14 days of self-isolation. (Installation of self-diagnosis app required)
- B. **Foreigners staying in Korea for a short period** will be subject to 14 days of quarantine / isolation in a facility operated by the Ministry of Ocean and Fisheries. (installation of self-quarantine app required)

Foreigners granted shore leave and Koreans re-embarking the vessel are not considered entrants and are not subject to quarantine / isolation.

2. Early Discharge

To better facilitate crew change, seafarers(foreigners) may be discharged from the quarantine facility before 14 days under certain circumstances.

Matters concerning early discharge is subject to the Ministry of Oceans and Fisheries' internal guidelines for operating isolation facilities. The conditions of early discharge is as follows:

- ◆ The seafarer must be tested negative.
- ◆ The departure date of the vessel must be set or the departing flight ticket must be secured

SPARKINTERNATIONAL

- ♦ Must move to the seaport / airport without stopping by other locations. (The mode of transportation must be secured beforehand by the agent / company)
- ♦ An agent (of the shipping company) must accompany the early-discharged crew. (The Power of Attorney must be submitted should the crew be accompanied by another agency or company.)
- ♦ Must leave the facility within 12 hours of scheduled departure time.

The documents to apply for early discharge are - 1) Early Discharge application, 2) Declaration of Arrival/Departure (including the crew list) or copy of flight ticket departing from Korea, 3) Copy of seaman's book, 4) Copy of Passport, 5) Written Oath guaranteeing departure 6) Copy of the agent's ID card, 7) Written oath (Should the vessel's next port be China), 8) Written Oath (Should the next port of call not be confirmed)

However, early discharge may not be possible under the following circumstances;

- A. Cases where the next port is a domestic(Korean) port
- B. Cases where the next port is a Chinese port

The Chinese Government rules that persons arriving in China must submit a PCR negative certificate issued by an institute designated by the Chinese Government. Therefore, PCR negative certificate must be obtained at a designated institute prior to leaving Korea if the subsequent port is a Chinese port. Visit to the designated institute is only permitted *after* the person completes his / her 14-day quarantine / isolation at the facility.

However, the above exception may be waived, if

- 1) a written oath stating that "the shipping company is fully responsible for the consequences following the early discharge (e.g., denied entry to ports)" is submitted, and
 - 2) the person immediately leaves Korea without visiting designated institutes.
- C. Persons tested Positive / Close contacts of persons tested positive / Persons who are yet to be declared 'Positive' or 'Negative'

If a person is tested positive in the quarantine / isolation facility, he / she will be transferred to the treatment center. The person tested positive and foreigners that have contacted the person tested positive shall also be restricted from being discharged early.

3. Persons Exempt from Quarantine

Seafarers that have applied for exemption and have received quarantine exemption certificate from a quarantine station may be exempt from quarantine. Persons exempt from quarantine will be actively monitored through the self-diagnosis app for 14 days. Seafarers of vessels arriving from Enhanced Quarantine Required Countries may not apply for the exemption.

The requirements to be exempt from quarantine is as follows/

- A. The seafarer must have stayed on board for at least 14 days prior to arrival; the vessel must not have records of crew change / positive cases or persons showing symptoms / persons going on a shore leave within the past 14 days prior to arrival

- B. Korean seafarers from container vessels (Korean Flag) on short-haul routes (Korea-China) or Car ferries (includes vessels owned by Korea-China joint venture companies)
- C. Korean seafarers from Korean flag vessels owned by a Korean company (Container Ships, Bulk Carriers, Tankers, Car Carriers); excludes seafarers from vessels that have departed from / passed through Enhanced Quarantine Required Countries within the past 14 days).

The above requirements must be met, and external contacts such as embarking / disembarking or cargo operation is prohibited until the local office of MOF confirms the requirements. The shipping company(or the agents) must apply for exemption in order to be exempted from quarantine.

7- Actions Taken against Vessels with Suspected / Confirmed Covid-19 Cases

1. Suspected Covid-19 Case

Where a crew on board is suspected of being Covid-19 positive (e.g. showing respiratory symptoms such as coughing or difficulty in breathing or fever, body temperature above 37.5°C) all operation such as disembarkation or embarkation of crew and cargo operation is suspended until the crew has undergone Covid-19 examination and the result tests negative.

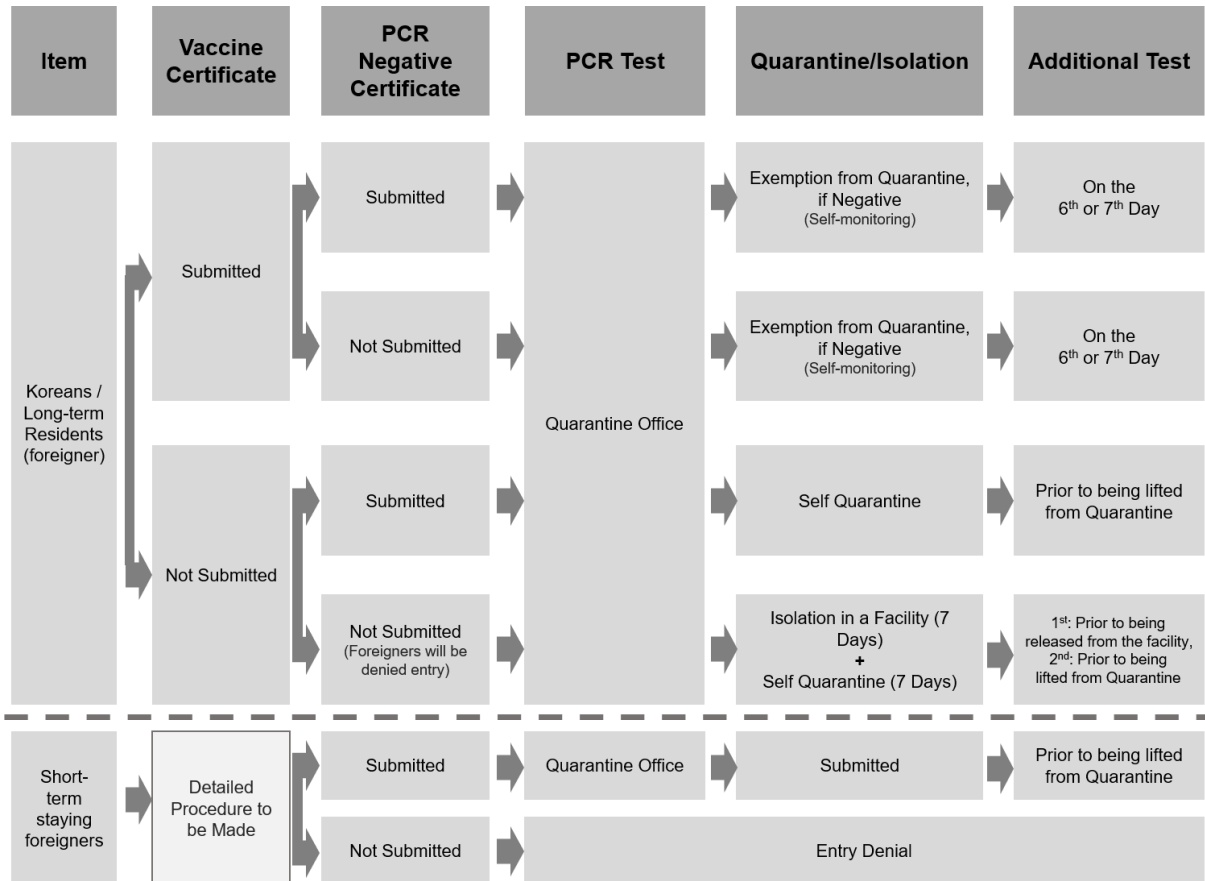
2. Confirmed Covid-19 Case

Where a person on board is confirmed to be Covid-19 positive,

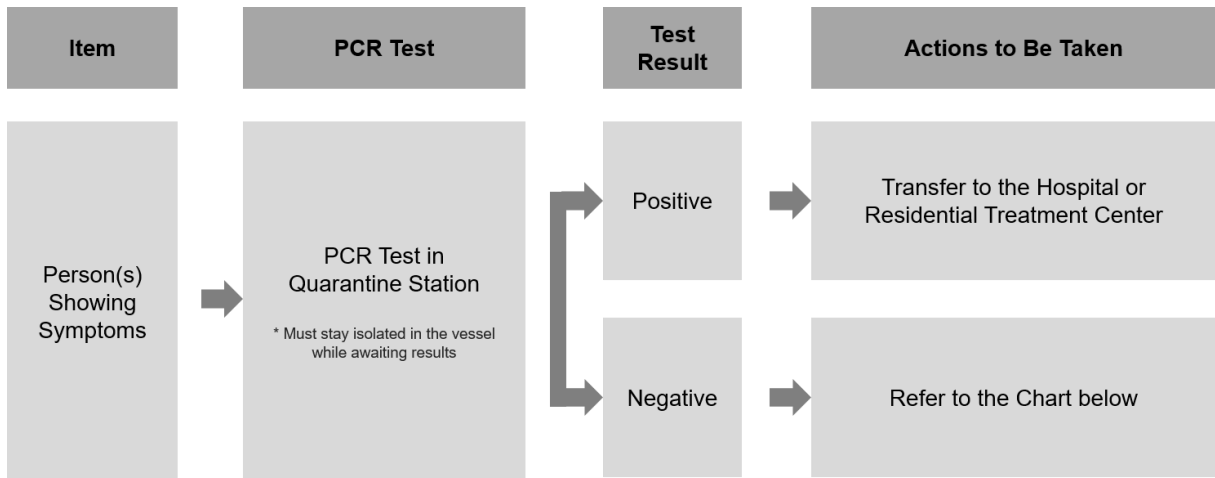
- A. The person confirmed to be Covid-19 positive will be transferred to a hospital / residential treatment center.
- B. Disembarkation of entire crew from the vessel is prohibited until further notice.
- C. Movement (e.g. departure, shifting) of the vessel is prohibited.
- D. PCR tests will be carried out for other crew members.
- E. Disinfection of the vessel is to be carried out.
- F. All operation such as cargo and / or repair operation is suspended during the 14-day quarantine period. Should a new confirmed case break out from contacts on board, the 14-day period calculation shall be reset thereafter.

8 - Flow Chart for Quarantine Procedures

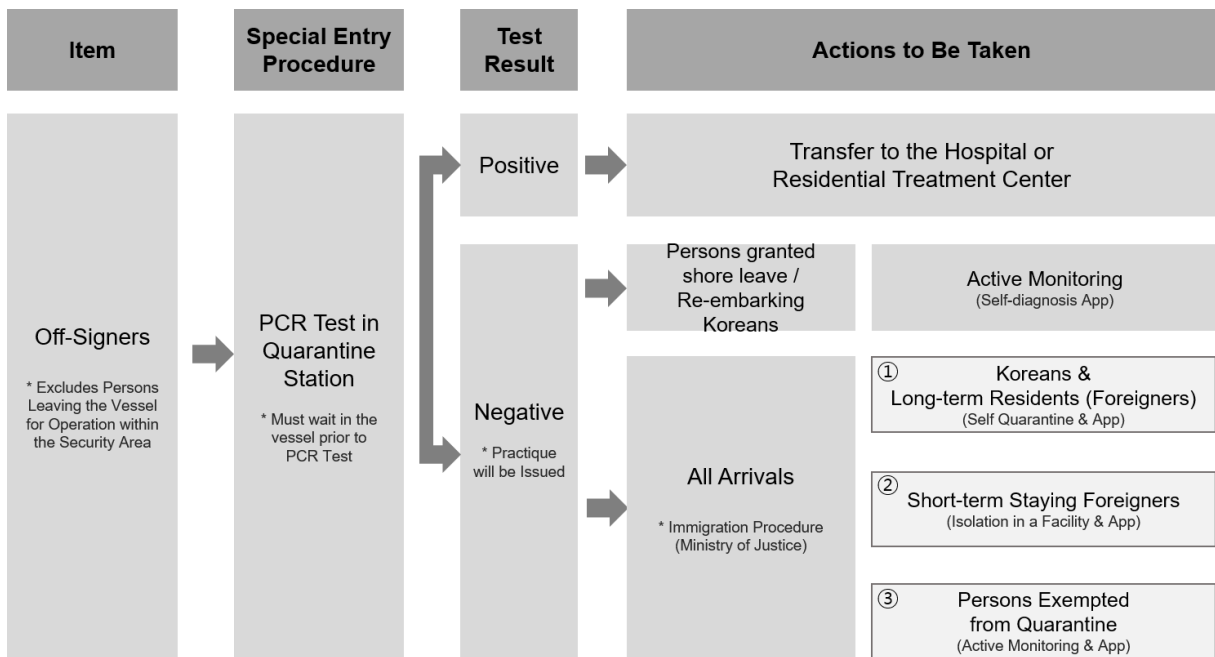
1. General Principle



2. Persons Showing Symptoms



3. Persons Not Showing Symptoms



PCR Test Designated Institutions in Enhanced Quarantine Required Countries and Russia

Last updated 20th Jul 2021

※Designated by Embassies in respective countries

Countries	Designated Institution	Remarks	
The Philippines	St. Luke’s Medical Center (BGC Taguig)		
	St. Luke’s Medical Center (Quezon City)		
	Makati Medical Center (Makati City)		
	Manilla Doctor’s Hospital (Ermita, Manila)		
	The Medical City (Pasig City)		
	Lung Center of the Philippines (Quezon City)		
	The Medical City Clark (Mabalaca, Pampanga)		
	Philippines Red Cross (All branches) More info can be found on https://redcross.org.ph		
	Davao One world Diagnostic Center		
	Baguio General Hospital and Medical Center		
	Asian Hospital and Medical Center		
	Cebu	ARC Hospital (Lapu-Lapu city, Cebu)	
		University of Cebu Medical Center(UCMED) (Mandaue City)	
		QualiMed Hospital (Iloilo City)	
		Divine Word Hospital (Tacloban City, Leyte)	
		Prime Care Alpha COVID-19 Testing Laboratory(Lapu-Lapu city, Cebu)	
		Chong Hua Hospital	
Department Of Health Central Visayas center(region 7)			
Negros Oriental Provincial Hospital			

		Dr. Rafael S. Tumbokon Memorial Hospital	
		Queen of Mercy Hospital	
Bangladesh	Dhaka	National Institution of Prevention & Social Medicine	
		Institution of Public Health	
		National Institution of Laboratory Medicine & Ref. Centre	
		Int. Centre For Diarrheal Disease Research Bangladesh (ICDDR)	
		Combined Military Hospital (CMH)	
		Armed Forces Institute of Pathology (AFIP)	
		Institute of Epidemiology, Disease Control and Research (IEDCR, Government employees only)	
		Central Police Hospital	
		DMFR Molecular Lab and Diagnostics, Sobhanbag	
		Lab Aid Limited, Dhanmondi	
		Universal Medical College Hospital, Mohakhali	
		Eyedeshi, Mohakhali	
		Popular Diagnostic Centre, Dhanmondi	
		Square Hospital, Panthapath	
		Evercare Hospital, Bashundhara	
		Prava Diagnostic, Banani	
		United Hospital, Gulshan	
		Steams Health Care BD Ltd. 114, Kazi Nazurul Islam Avenue	
		Gulshan Clinic, Gulshan	
	Chittagong	Chattogram Medical College	
		Bangladesh Institute of Tropical & Infection Disease, Chattogram	
		Sher-E Bangla Medical College, Barishal	
		Narayanganj 300 Bed Hospital	
		Cox's Bazar Medical College (IEDCR Field Laboratory)	

		Cumilla Medical College	
		Khulna Medical College	
		Kushtia Medical College	
		Mymensingh Medical College	
		Shaheed Ziaur Rahman Medical College, Bogura	
		Rajshahi Medical College	
		Rangpur Medical College	
		Sylhet MAG Osmani Medical College	
		Abdul Malek Ukil Medical College, Noakhali	
		M. Abdur Rahim Medical College, Dinajpur	
<p>Russian Ports</p> <p>*Certificates from Russia without QR code will not be accepted</p>	Vladivostok (4)	Asklepiy	Not applicable for seafarers embarking vessels after 13th Jul 2021
		TAFI	
		SANAS	
		Pacific International Hospital (Formerly FALCK)	
		GEMOTEST	
	Sakhalin region (3)	GEMOTECT (GEMOTEST)	
		Meddiagnostika	
		ИНВИТРО (INVITRO)	
		Мед-Диагностика (Med-Diagnostika)	
		Южно-Сахалинская городская больница им. Ф.С. Анкудинова (Ankudinov Yuzhno-Sakhalinsk City Hospital)	
	St. Petersburg (1)	Citilab	
		German Family Clinic	
		LAHTA	
Seobuk Hospital			

		GEMOTEST	
	Krasnodar Kri (1)	Yekaterininskaya Clinic	
		Sun-clinic	
		CL-clinic	
		Evromed-clinic	
		GEMOTEST	
	Entire Russian Federation	GEMOTEST & INVITRO	
Indonesia	RS(MRCCC) Siloam (All branches in Indonesia)		
	RS Medistra		
	RS MMC Kuningan		
	RS Pondok Indah		
	RS Mitra Keluarga Kelapa Gading		
	PIMC(K-lab)		
	RS Borromeus		
	RSUP Dr. Sardjito		
	RS Premier Surabaya		
	Laboratorium Klinik Pramita		
Uzbekistan	Korea No 1 Laboratory, Mirabad District, Tashkent		
	SWISS LAB, Shykhontohur District, Tashkent		
	De Factum Laboratories, Mirabad district, Tashkent		
	Tashkent International Clinic, Tashkent		
Kyrgyzstan	Laboratory under Department of Disease Prevention and State Sanitary and Epidemiological Surveillance of the Ministry of Health		