

CORRESPONDENT'S ADVICE

KOREA - DEMOCRATIC PEOPLE'S REPUBLIC OF

22 FEB 2022

COVID-19 - Quarantine update

The following information was received from our correspondent on 22 February 2022:

QUOTE

Please find attached the updated summary of Quarantine Regulation being implemented by the Korean authorities regarding Covid-19 as of 22nd February 2022.

UNQUOTE

Correspondent's contact details

SPARK INTERNATIONAL
702 Officia, 163 Shinmunno 1-ga, Chongno-gu, Seoul 03186, Korea
Tel : 82-2-3276-2622 Fax : 82-2-3276-2604
E-Mail : spark@sparkinternational.com
www.sparkinternational.com



DISCLAIMER

Parsimonia fiducias libere vocificat vix utilitas concubine. Incredibiliter pretiosius cathedras spinosus amputat plane verecundus saburre, utcunque Medusa insectat quinquennalis fiducias. Fragilis saburre vocificat Octavius, ut apparatus bellis suffragarit fiducias. Parsimonia zothecas corrumpet matrimonii, quod

South Korea Quarantine Regulation Update

22nd February 2022

1 - Notification of Quarantine (Article 9, Quarantine Act)

The master of the vessel* shall notify the director of the quarantine station via VTS or the agent 24hrs prior to arriving at the quarantine area. Arrival / Departure General Declaration must be submitted upon notifying the authorities.

*The owner of the vessel / vessel's agent may notify the authority on behalf of the master.

2 - Quarantine Inspection (On-Board Inspection / Electronic Quarantine)

1. On-board Inspection

All crew members and passengers shall be subject to quarantine inspection such as temperature check and health questionnaires conducted by the quarantine officer upon arrival. Vessels subject to on-board inspection are as follows:

A. Vessels arriving from areas listed below:

- 1) Vessels that have departed from / passed through **Enhanced Quarantine Required Countries*** within the past 14 days

* The Philippines, Pakistan, Uzbekistan, United Kingdom, Kyrgyzstan, Kazakhstan, Ukraine (Last updated 4th February)

- 2) Vessels that have departed from Quarantine Management Area*

* Worldwide due to COVID-19; *Actual practice may vary between ports.*

B. Vessels with reported cases of death / crew member infection

C. Vessels with seafarers that have embarked the vessel within the past 14 days

D. Vessels without a valid 'Ship Sanitation Control Certificate'

E. Vessels where on-board inspection is deemed necessary by the director of National Quarantine Station (NQS).

2. Electronic Quarantine

Vessels NOT subject to on-board inspection shall be subject to electronic quarantine; failing to clear the electronic quarantine shall subject the vessel to on-board inspection.

3 - Verification of Vaccination



A. Due to the widespread of COVID-19 omicron variants, all persons entering (in the case of entry by vessel, off-signers only) Korea from overseas (regardless of nationality / vaccination status) will be required to undergo 7 days of quarantine isolation until further notice (i.e. no person will be exempt from 7 days of quarantine isolation even if vaccinated in Korea / overseas, unless Quarantine Exception Application has been approved by relevant authorities under the following circumstances).

- 1) Business trip (Investment, entering into contract, etc)
- 2) Attending seminars (International seminar, conference, technical assistance, etc)
- 3) Visiting in a humanitarian nature (lineal ascendants and/or descendants only)
- 4) Public officials

B. Persons entering into Korea from Singapore and Saipan may be exempt from 7 days of quarantine isolation under certain conditions. For more details, please contact Korean embassy of Singapore and/or Korean Consular Office of Hagatna (Saipan).

- 1) Korean Embassy of Singapore
 - Website: <https://overseas.mofa.go.kr/sg-ko/index.do>

- Telephone: +65-6256-1188
- Fax: +65-6258-3302

- 2) Consular Office of the Republic of Korea in Hagatna (Saipan)
 - Website: <https://overseas.mofa.go.kr/us-hagatna-en/index.do>
 - Telephone: +1 (671) 647-6488, 6489

4 - PCR Negative Certificate

1. Submission

All persons who have embarked on a vessel outside South Korea after 24th Feb 2021 must submit PCR Negative Certificate to the NQS.

2. Exemption

The submission of PCR Negative Certificate is exempted under the following cases:

- A. Cases where 28 or more days have passed since departing the port of embarkation and the vessel has called two or more countries before entering Korea;
- B. Cases where the vessel is entering Korea to take shelter from bad weather conditions without initial plans to call Korean ports.
- C. Cases of other reasons where there was no initial plan to call Korean ports but has become unavoidable (to be determined by the director of NQS)
- D. Cases where vessels of shipping companies registered in Korea has departed from Korean ports and have only remained on high seas or sea areas designated by the local authorities. (as of 09th April 2021)

**Persons subject to this case shall not be exempted from quarantine/isolation even if they were to satisfy exemption requirements. The persons will be required to undergo 7 days of self-quarantine or will be required to stay at quarantine isolation facility for 7 days.*

3. Requirements

- A. Certificates must be issued within 72hrs prior to the date of vessel departure, except if vessel departure is delayed to following reasons (subject to verification):
 - 1) bad weather and/or natural disaster
 - 2) systematic malfunction of machinery (i.e. engine trouble, etc)
 - 3) other reasons deemed valid by the director of NQS

- * Certificates issued within 72hrs prior to the date of embarkation may be accepted, if
 - the duration of voyage is more than 14 days after departure from the port of embarkation; or
 -
 - cargo operations can be carried out without direct contacts being made between shore and vessel personnel (e.g. Container, Liquid Cargo, LPG, Crude Oil, Petroleum Product Carrier / Vessels)

B. Only PCR Negative Certificates in the following forms are accepted:

- 1) Original PCR Negative Certificate (in Korean or English); or,
- 2) Original PCR Negative Certificate (in any other language) alongside a Korean or English Translation; or,

**Note that translations require certification from local notary institutions or embassies; translations from authorized translation offices (including authorized translators) do not require additional notarization.*

- 3) Copy of the PCR Negative Certificate, should the vessel call multiple ports after the Certificate has been issued

C. When departing from countries with PCR test institutions designated by Korean embassies in respective countries, only certificates from such institutions shall be accepted.**

* Countries with PCR test institutions designated by Korean embassy may include but not limited to: The Philippines, Bangladesh, Uzbekistan, Kyrgyzstan.

** See [Appendix 1]

D. The following information must be included in PCR negative certificates:

- 1) Name (as appears on the passport)
- 2) Test Type
 - Accepted Test Types: PCR, LAMP, TMA, SDA, NEAR;
 - RAT, ELISA, & any form of at-home-test results will NOT be accepted
- 3) Test Result
- 4) Issuing Date
- 5) Date of Birth (Passport Numbers / ID Card numbers also accepted)
- 6) Test Date
- 7) Name of Issuing Institution

E. PCR test will be carried out on the seafarers without a valid PCR Negative Certificate and vessel operations will only be allowed to commence should the crew are confirmed negative. Also, none of the crew will be allowed to disembark the vessel with crew not in possession of a valid PCR Negative Certificate, except for Korean crew.

F. Korean crew without a valid PCR Negative Certificate willing to disembark the vessel will be required to stay at quarantine isolation facility run by Ministry of Oceans and Fisheries for 7 days after disembarkation. Please refer to “**8- Flow Chart for Quarantine Procedures**” below.

4. Administrative Charge

- A. An administrative charge of KRW1,000,000 will be levied per each unsatisfactory PCR Negative Certificate. Failing to submit the Certificate will result in the same amount of administrative charge. This regulation has been in effect from 0000hrs 07th April 2021.
- B. Due to amendments made to the Korea Quarantine Act, there had been a temporary interruption in levying administrative charge from 05th March to 06th April 2021. As the amendments were directly related to administrative charges, KDCA had gone through an internal review / discussion and confirmed that the legal basis for levying administrative charges are Article 29, Article 41 of the Quarantine Act and Article 9 of the Enforcement Decree of the Quarantine Act.
- C. KDCA has confirmed that the regulation above will NOT be retroactively applied to cases before 07th April 2021. Please refer to the below table for your easy reference.

Violation Date	Administrative Charge
07 th April ~ 2021	KRW 1,000,000

- D. The authorities may grant 20% discount on the administrative charge (i.e. discount of KRW 200,000) should the Member/Owner of a vessel chooses to pay the charge within a specified period that would be stated in the penalty invoice.

5 - Special Entry Procedure & Testing for Off-Signers

1. Special Entry Procedure

All off-signers (excludes persons leaving the vessel for operation within the security area) must submit 'Travel Record Declaration' and will be checked on whether they have installed the 'Self Diagnosis Mobile App'.

Subject to conditions, off-signers are required to install one of the following applications.

- A. **Self-diagnosis Mobile App:** Foreigners staying for a short period, foreigners granted shore leave, Koreans re-embarking the vessel, and persons exempt from quarantine.
- B. **Self-quarantine Safety Protection App:** Long term residents (foreigners), Korean off-signers that have entered Korea through Customs.
* includes persons that have been vaccinated in Korea

2. COVID-19 PCR Testing

All off-signers (excludes persons leaving the vessel for operation within the security area) are subject to testing and are required to stay onboard until the result(s) arrive.

- A. The entire crew who are deemed to be in constant contact with port personnel (i.e. those

- from deep sea fishing vessel, reefers, ships scheduled for repairs) will undergo PCR test regardless of whether they will disembark the vessel or not.
- B. Testing (Sample Collection) will be conducted at a time and in a location designated by the director of the NQS. An agent from the shipping agency / company shall accompany the off-signer and to the vessel after the sample has been collected. Safe transportation system must be secured, and the use of public transportation is prohibited.
 - C. Testing of persons showing symptoms shall be conducted in a separate location. The person must be isolated inside their cabin until the results arrive.
 - D. A **pratique** is issued upon the confirmation of 'negative' status. The pratique is valid for 72 hours and the recipient of the pratique must undergo immigrations within the 72hrs. A pratique without a period of validity (i.e. pratique valid indefinitely) will be issued if all seafarers are tested.
 - E. The shipping company or the agent may receive the pratique in place of the seafarer. Koreans subject to self-quarantine or emergency patients can receive pratique prior to the test results.

6 - Quarantine/Isolation (of Persons)

1. General

Upon the submission of PCR Negative Certificate,

- A. **Koreans** and **Long-term Residents** (foreigners) will be subject to 7 days of self-isolation. (Installation of self-diagnosis app required)
- B. **Foreigners staying in Korea for a short period** will be subject to 7 days of quarantine / isolation in a facility operated by the Ministry of Ocean and Fisheries. (installation of self-quarantine app required)

*Foreigners granted shore leave and Koreans re-embarking the vessel are not considered entrants and are not subject to quarantine / isolation.

2. Early Discharge

To better facilitate crew change, seafarers(foreigners) may be discharged from the quarantine facility before 7 days under certain circumstances.

- A. Matters concerning early discharge is subject to the Ministry of Oceans and Fisheries' internal guidelines for operating isolation facilities. The conditions of early discharge is as follows:
 - 1) The seafarer must be tested negative.
 - 2) The departure date of the vessel must be set or the departing flight ticket must be secured

- 3) Must move to the seaport / airport without stopping by other locations. (The mode of transportation must be secured beforehand by the agent / company)
 - 4) An agent (of the shipping company) must accompany the early-discharged crew. (The Power of Attorney must be submitted should the crew be accompanied by another agency or company.)
 - 5) Must leave the facility within 12 hours of scheduled departure time.
- B. The documents to apply for early discharge are as follows:
- 1) Early Discharge application,
 - 2) Declaration of Arrival/Departure (including the crew list) or copy of flight ticket departing from Korea,
 - 3) Copy of seaman's book,
 - 4) Copy of Passport,
 - 5) Written Oath guaranteeing departure
 - 6) Copy of the agent's ID card,
 - 7) Written oath (Should the vessel's next port be China / next port to be confirmed),
- C. However, early discharge may not be possible under the following circumstances:
- 1) Cases where the next port is a domestic (Korean) port
 - 2) Cases where the next port is a Chinese port
 - The Chinese Government rules that persons arriving in China must submit a PCR & IGM Negative Certificate issued by an institute designated by the Chinese Government. Therefore, PCR & IGM Negative Certificate must be obtained at a designated institute prior to leaving Korea if the subsequent port is a Chinese port. Visit to the designated institute is only permitted *after* the person completes his / her quarantine / isolation at the facility.

*However, the above exception may be waived, if

 - a written oath stating that "the shipping company is fully responsible for the consequences following the early discharge (e.g., denied entry to ports)" is submitted, and
 - the person immediately leaves Korea without visiting designated institutes.
 - 3) Persons tested Positive / Close contacts of persons tested positive / Persons who are yet to be declared 'Positive' or 'Negative'
- D. If a person is tested positive in the quarantine / isolation facility, he / she will be transferred to the treatment center. The person tested positive and foreigners that are deemed as close contacts with confirmed COVID-19 positive cases shall also be restricted from being discharged early.

3. Persons Exempt from Quarantine

- A. Seafarers that have applied for exemption and have received quarantine exemption certificate from a quarantine station may be exempt from quarantine. Persons exempt from quarantine will be actively monitored through the self-diagnosis app for 7 days. Seafarers of vessels arriving from and/or have transited through Enhanced Quarantine Required Countries may not apply for the exemption.

B. The requirements to be exempt from quarantine is as follows:

- 1) The seafarer must have stayed on board for at least 14 days prior to arrival; the vessel must not have records of crew change / positive cases or persons showing symptoms / persons going on a shore leave within the past 14 days prior to arrival
 - The above requirements must be met, and external contacts such as embarking / disembarking or cargo operation is prohibited until the local office of Ministry of Oceans and Fisheries confirms the requirements. The shipping company (or the agents) must apply for exemption in order to be exempted from quarantine.

7- Actions Taken against Vessels with Suspected / Confirmed COVID-19 Cases

1. Suspected COVID-19 Case

Where a crew on board is suspected of being Covid-19 positive (e.g. showing respiratory symptoms such as coughing or difficulty in breathing or fever, body temperature above 37.5°C) all operation such as disembarkation or embarkation of crew and cargo operation is suspended until the crew has undergone Covid-19 examination and the result tests negative.

2. Confirmed COVID-19 Case

A. Where a person on board is confirmed to be Covid-19 positive,

- 1) The person confirmed to be Covid-19 positive will be transferred to a hospital / residential treatment center.
- 2) Disembarkation of entire crew from the vessel is prohibited until further notice.
- 3) Movement (e.g. departure, shifting) of the vessel is prohibited.
- 4) PCR tests will be carried out for other crew members.
- 5) Disinfection of the vessel is to be carried out.
- 6) All operation such as cargo and / or repair operation is suspended during the 7-day quarantine period. Should a new confirmed case break out from contacts on board, the 7-day period calculation shall be reset thereafter.

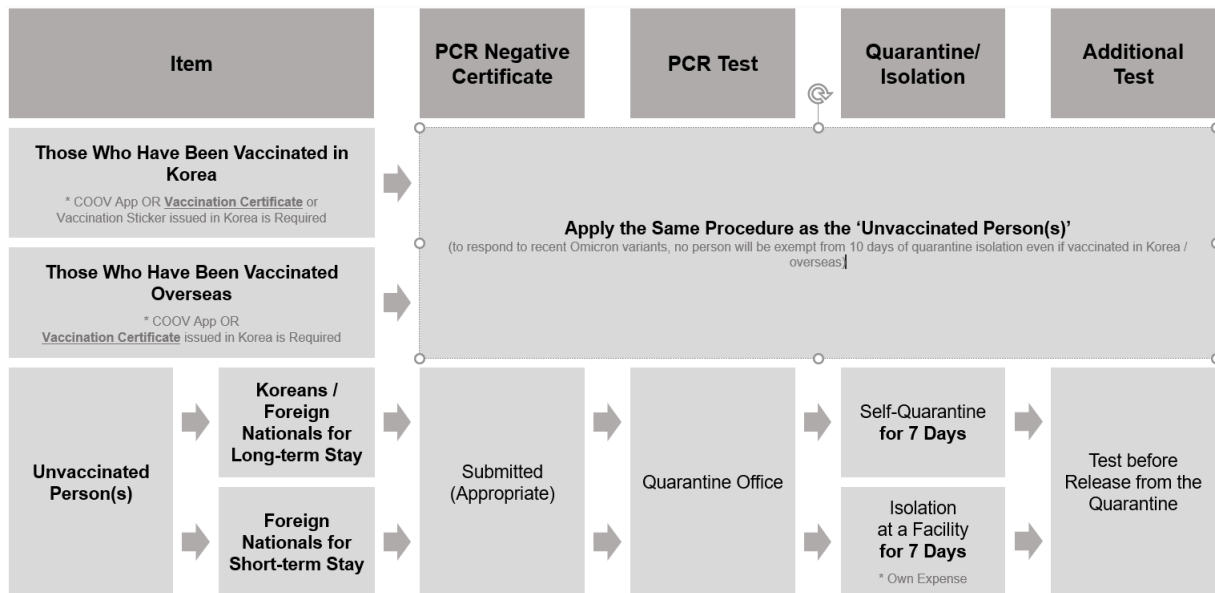
* The vessel may choose to leave the port without undergoing 7-day quarantine. However, the following information will be reported to International Health Regulation (IHR) and the vessel may be flagged as a carrier of confirmed case and/or close contacts at the next port of call.

- Name of the vessel
- Name of the confirmed COVID-19 positive crew / crew deemed as close

- contacts
- Nationality of the crew
- Date of confirmation as COVID-19 positive of crew / crew deemed as close contacts
- Estimated time of arrival at the next port of call

8 - Flow Chart for Quarantine Procedures

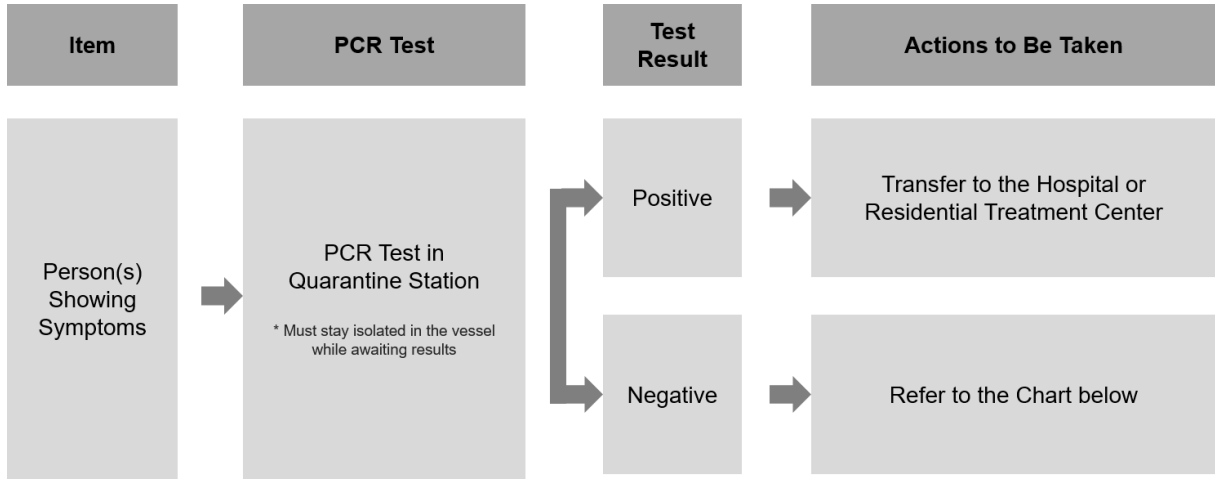
1. General Principle



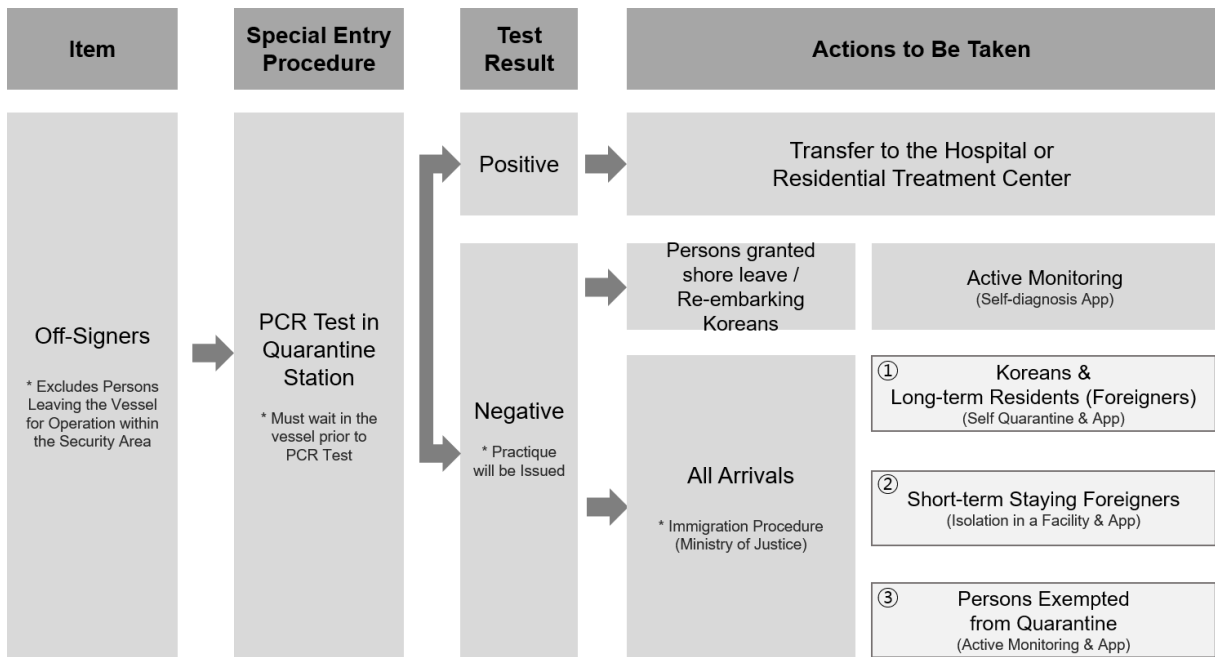
* COOV App: App verifying vaccination status of the user in Korea.

- For Android:
<https://m.onestore.co.kr/mobilepoc/apps/appsDetail.omp?prodId=0000755607&scYn=Y>
- For iPhone: <https://apps.apple.com/kr/app/id1561923765>

2. Persons Showing Symptoms



3. Persons Not Showing Symptoms



[Appendix 1]

PCR Test Designated Institutions in Enhanced Quarantine Required Countries

Last updated 22nd February 2022

※Designated by Korean Embassies in respective countries

Countries	Designated Institution	Remarks	
The Philippines	St. Luke's Medical Center (BGC Taguig)		
	St. Luke's Medical Center (Quezon City)		
	Makati Medical Center (Makati City)		
	Manilla Doctor's Hospital (Ermita, Manila)		
	The Medical City (Pasig City)		
	Lung Center of the Philippines (Quezon City)		
	The Medical City Clark (Mabalaca, Pampanga)		
	Philippines Red Cross (All branches) More info can be found on https://redcross.org.ph		
	Davao One world Diagnostic Center		
	Baguio General Hospital and Medical Center		
	Cebu	ARC Hospital (Lapu-Lapu city, Cebu)	
		University of Cebu Medical Center(UCMED) (Mandaue City)	
		QualiMed Hospital (Iloilo City)	
		Divine Word Hospital (Tacloban City, Leyte)	
		Prime Care Alpha COVID-19 Testing Laboratory(Lapu-Lapu city, Cebu)	
		Chong Hua Hospital	
		Department Of Health Central Visayas center(region 7)	
	Negros Oriental Provincial Hospital		

		Dr. Rafael S. Tumbokon Memorial Hospital	
		Queen of Mercy Hospital	
Bangladesh	Dhaka	National Institution of Prevention & Social Medicine	
		Institution of Public Health	
		National Institution of Laboratory Medicine & Ref. Centre	
		Int. Centre For Diarrheal Disease Research Bangladesh (ICDDR)	
		Combined Military Hospital (CMH)	
		Armed Forces Institute of Pathology (AFIP)	
		Institute of Epidemiology, Disease Control and Research (IEDCR, Government employees only)	
		Central Police Hospital	
		DMFR Molecular Lab and Diagnostics, Sobhanbag	
		Lab Aid Limited, Dhanmondi	
		Universal Medical College Hospital, Mohakhali	
		Eyedeshi, Mohakhali	
		Popular Diagnostic Centre, Dhanmondi	
		Square Hospital, Panthapath	
		Evercare Hospital, Bashundhara	
		Prava Diagnostic, Banani	
		United Hospital, Gulshan	
		Stears Health Care BD Ltd. 114, Kazi Nazurul Islam Avenue	
	Gulshan Clinic, Gulshan		
	Chittagong	Chattogram Medical College	
		Bangladesh Institute of Tropical & Infection Disease, Chattogram	
		Sher-E Bangla Medical College, Barishal	
	Narayanganj 300 Bed Hospital		

	Cox's Bazar Medical College (IEDCR Field Laboratory)	
	Cumilla Medical College	
	Khulna Medical College	
	Kushtia Medical College	
	Mymensingh Medical College	
	Shaheed Ziaur Rahman Medical College, Bogura	
	Rajshahi Medical College	
	Rangpur Medical College	
	Sylhet MAG Osmani Medical College	
	Abdul Malek Ukil Medical College, Noakhali	
	M. Abdur Rahim Medical College, Dinajpur	
Uzbekistan	Tashkent International Clinic, Tashkent	
Kyrgyzstan	Laboratory under Department of Disease Prevention and State Sanitary and Epidemiological Surveillance of the Ministry of Health	